

13"x13" Modular

LED Dance Floor



General Description:

LED Dance Floor features a built in touch pressure sensor. Each dance floor piece can run separately or combined with WDM Dance Floor Controller the color brightness, color changing speeds, and sensitivity are adjustable. The WDM Dance Floor Controller also allows for sound activated control, which allows the color to change along with the beat of music. One controller can control up to 512 Dance Floor pieces.

Specification:

Unit Dimension: 13" x 13" x 4"

Light source: Super bright LEDs

Qty of LEDs: 108pcs (36R/36G/36B)

Material of cover: 10mm thickness Tempered glass

Material of base: ABS

Max. Load: 500KG/sqrs.

Net. Weight: 10lbs. (4.5kg)

IP Rate: IP65

Input voltage: AC110~240V

Power: 9W

Working environment: -10°C to 40°C

Relative humidity: 10% to 90%

13"x13" Modular

LED Dance Floor

LED Dance Floor Controller Features:



Speed Control:



→ **SPEED ADJUSTMENT BUTTON**
→ **SPEED ON/OFF BUTTON**

1. Press the "Speed ON/OFF" button in to activate Speed Mode.
2. Turn the "Speed Adjustment" button from left to right to adjust the light speed for the dance floor.

Bright Control:



→ **BRIGHT ADJUSTMENT BUTTON**
→ **BRIGHT ON/OFF BUTTON**

1. Press the "Bright ON/OFF" button in to activate Bright Mode.
2. Turn the "Bright Adjustment" button from left to right to adjust the light brightness for the dance floor.

Shake Control:



→ **SHAKE ADJUSTMENT BUTTON**
→ **SHAKE ON/OFF BUTTON**

1. Press the "Shake ON/OFF" button in to activate Shake Mode.
2. Turn the "Shake Adjustment" button from left to right to adjust the shake of light for the dance floor.

Sound Control:



→ **SOUND ADJUSTMENT BUTTON**
→ **SOUND ON/OFF BUTTON**

1. Press the "Sound ON/OFF" button in to activate sound activation mode.
2. Turn the "Sound Adjustment" button from left to right to adjust the amount of sound activated control is desired.

13"x13" Modular

LED Dance Floor

LED Dance Floor Controller Features:



Data Download Port:



Data Download Port

Connecting a USB connector cable to the Data Download Port, you can download the DIY program shows from PC to controller.

Sound Sensor



Sound Sensor Data Port

This port enables the dance floor to respond to the beat of music.

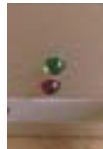
Audio Jack



Audio Jack Data Port

When connecting to a PC, the dance floor will change color with the pace of the music played on PC.

Red And Green Light Signals



Red Signal: when on, it means there are some mistakes with data transfers.

Green Signal: when on, it means everything is good with data transfers.

AC power input & signal output



AC110~240V power input and signal output.

Accessories:



USB connector Cable



T Connector Cable



Splice Connector Cable

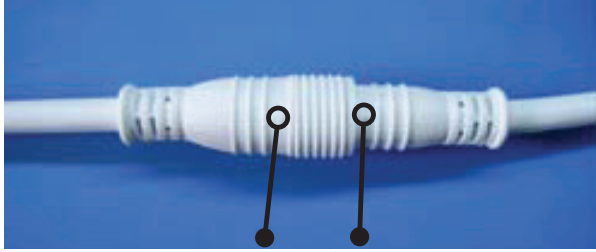


End Plug
(Avoid electricity shock)

13"x13" Modular

LED Dance Floor

Operations:



Male Connector



Female Connector



Color Edit Software

1. Connect the female connector of T power cables to the male connector of the first LED Dance Floor.

NOTE: Please be noticed the arrows direction on both the male and female connectors. Arrow to arrow. If not, it may cause burn out failure.

2. Then connect the female connector of the first LED Dance Floor to the male connector of the second dance floor. On and on, to use end plug to connect to the female connector of the last dance floor to avoid electricity shock.

3. Then plug the T into power AC100-240V. The dance floors will run automatically with built in programs.

4. Connect the male connector of T power cords to the controller. The dance floor will run according to the programs pre-set in controllers. You can create custom DIY the programs with "Color Edit" software on PC and download it to controller with the USB connector. (To set both PCB mode and Unit mode as "1*1")

5. You can choose to control this dance floor under different modes with different sensitivity. You can adjust the brightness and speed.

NOTE: But please be noted that the "shake" mode and "sound" mode can't be chose at the same time.

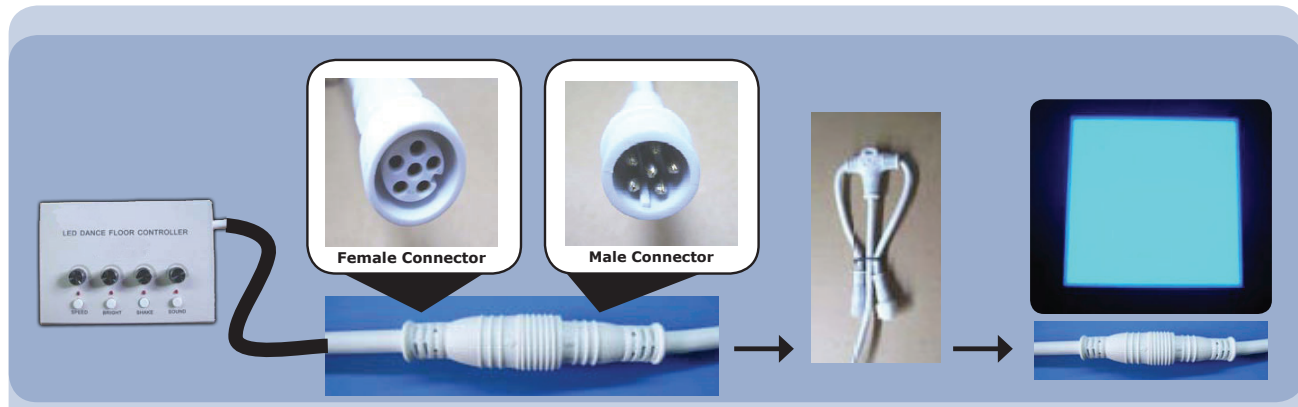
13" x 13" Modular

LED Dance Floor

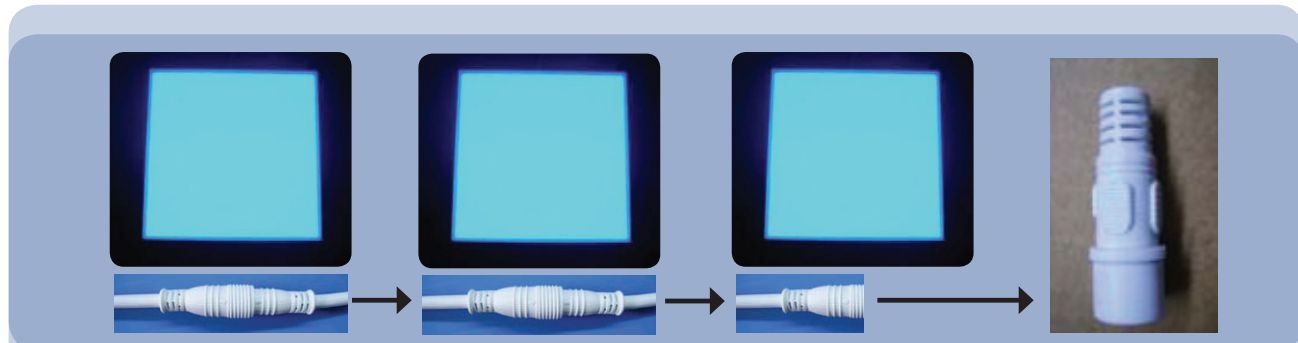
Wire Diagram:



The Following is how to wire multiple LED Dance Floor pieces to a WDM Dance floor controller, then to each other.



1. Connect the female connector of the LED Dance Floor Controller AC power input & signal output to the male connector of the T Connector Cable.
2. Then connect the female connector of the T Connector Cable to the Male connector of the 1st LED Dance Floor.



3. Connect the female connector of 1st LED Dance Floor to the male connector of the 2nd LED Dance, and so on...
4. On the male connector of the last LED Dance connect an End Plug.