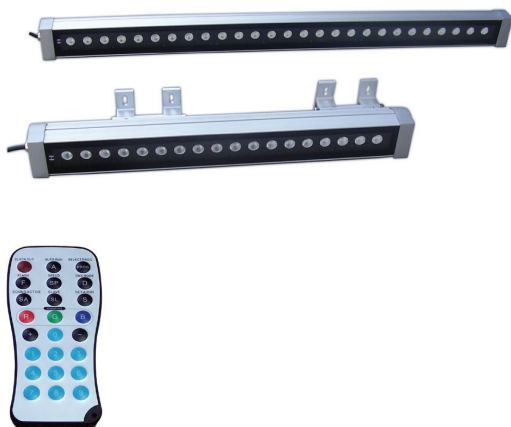
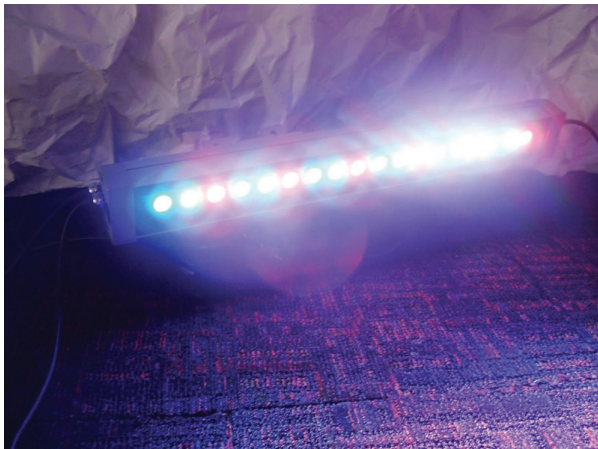


39" Hi Power ColorBar

LED Fixture



Overview:

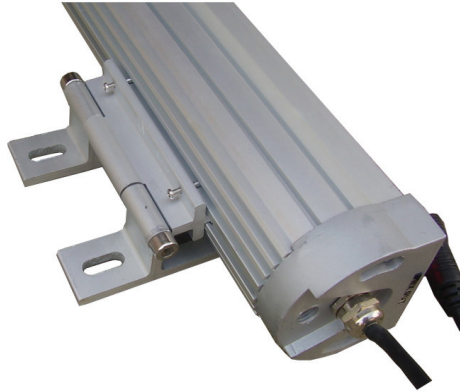
Hi Power Colorbars are designed with a number of low energy but bright and powerful 1 Watt LEDs. Housed in a silver coated aluminum construction, these fixtures are available in a 39" and 24" length models.

Key Features:

- :: Control via optional IR remote or any regular 512-DMX-controller
- :: Functions: static colors, automatic color change, internal programs, strobe effect, Master/Slave
- :: Ideal LED-luminary for outdoor use
- :: Fixed installation is recommended
- :: Locking possibility at the mounting bracket
- :: Perfect in public places and in front of buildings
- :: The weather-resistant housing also allows operation during bad weather
- :: Extremely compact housing in an appealing design
- :: Ready for connection with power cord and safety power plug
- :: Advantages of high-power LED-technology: extreme light output, extremely long life, low power consumption, defacto maintenance free

39" Hi Power ColorBar

LED Fixture



Specification:

39" Model

- :: Input Power: 100-240V 50HZ/60HZ
- :: Power Consumption 40 Watts
- :: 27 One Watt LED's(RED 9 GREEN 9 BLUE 9)
- :: Beam Angle: elliptical lens with degree 30 x 65
- :: Selectable built in programs, auto run, DMX mode, M/S mode
- :: Control mode: receiving IR signal or DMX signal
- :: Outdoor rated IP44
- :: Aluminum Construction
- :: 39" x 3.1" x 5.1"

24" Model

- :: Input Power AC120V / 240V, 60Hz/50Hz
- :: Power Consumption 20 Watts
- :: 18 One Watt LED's(RED 6 GREEN 6 BLUE 6)
- :: Beam Angle: elliptical lens with degree 30 x 65
- :: Selectable built in programs, auto run, DMX mode, M/S mode
- :: Control mode: receiving IR signal or DMX signal
- :: Outdoor rated IP44
- :: Aluminum Construction
- :: 24" x 3.1" x 5.1"

39" Hi Power ColorBar

LED Fixture

Key Features::

DMX Values/Function

5 CHANNEL MODE

Channel	Value	Function
1	0 - 255	RED 0% - 100%
2	0 - 255	GREEN 0% - 100%
3	0 - 255	BLUE 0% - 100%
4	0 - 255	DIMMING 0% - 100%
5	0 - 10 11 - 255	STROBING NO FUNCTION STROBING SLOW - FAST

IR Remote

LED Controller



General Description:

The IR remote together with our LED lights can make colorful and dynamic light scenery effects. It is widely applied to entertainment hall, stage, social club and outdoor building decoration.

Key Features:

- Designed for quick and easy infrared wireless control
- Black Out
- Auto Run Button – Automatically run through all pre-set programs
- Select Program Button – control access to pre-set programs
- Flash Button – Active strobe function
- DMX Mode – Select different DMX channel modes
- Sound active button – Run programs in sound active mode
- Slave Mode – Control in Master/slave configuration
- Set Address – Set DMX addressing
- R, G & B Buttons – Adjust Red, Green & Blue LED values
- Number Buttons – Use to set DMX values
- For use up to 30 feet from fixture
- Dimensions (LxWxH): 4.5" x 2" x .25" / 110 x 46 x 7 mm

IR Remote

LED Controller

Controller Presets:



BLACKOUT- Pressing this button will turn off the fixture.

AUTO RUN - This button will run an automatic program. You can control the speed of the Auto Run by pressing the SPEED button first and then pressing the "+" and "-" buttons.

PROGRAM SELECTION- This button will let you access one of the seven static color selections. Press this button and then press the "+" or "-" to navigate through the seven programs.

FLASH - This button will activate the strobe effect. You can control the flash rate by pressing the "+" and "-" buttons. Press this button again to exit strobe mode.

SPEED - Press this button and use the "+" & "-" buttons to adjust the speed of the Auto run.

DMX MODE - This button will let you select which DMX mode you want to use. Some fixtures will come with different DMX channel modes. This button will switch between the different modes. Please see your corresponding fixture in this user manual to find out about your DMX modes, values, and traits.

SOUND ACTIVE - This button activates sound active mode. Sound active mode will not work for outdoor LED lights.

SLAVE - This designates the fixture as a slave fixture in a master/slave configuration.

SET ADDRESS - Press this button to set the DMX address. Press this button first, then press the numbers to set the address. **Example: DMX Address 1 Press "S001"**

DMX Address 245 Press "S245"

IR Remote

LED Controller

Controller Presets:

RGB - Press either one of these buttons, and then press the "+" and "-" to adjust the brightness.

"+" and "-" - Use these buttons to adjust the flash rate, speed of the Auto Run, dimming, and program selection.

DMX Controls:

Operating through a DMX controller gives the user the freedom to create their own programs tailored to their own individual needs. Note: Your fixture may have different DMX modes, please see the page corresponding to your fixture, to understand and set the DMX Mode.

1. Before connecting to a DMX controller, your fixture may have different DMX channel modes, please select your desired mode by using the DMX Mode button. Set the mode before you address the fixture. After you have selected your mode, set the DMX address for the fixture by pressing the "S" button and then use the number buttons to press in your desired address. See **"SET ADDRESS"** for examples.

2. Now you may connect the fixture via the XLR connections to any standard DMX controller. Please see your corresponding fixture in this user manual to find out about your DMX modes, values, and traits. **Note: Do not connect to DMX unless you use the default start address of 1.**

Notice: The IR remote is not available when the LED lights controlled by DMX controller.