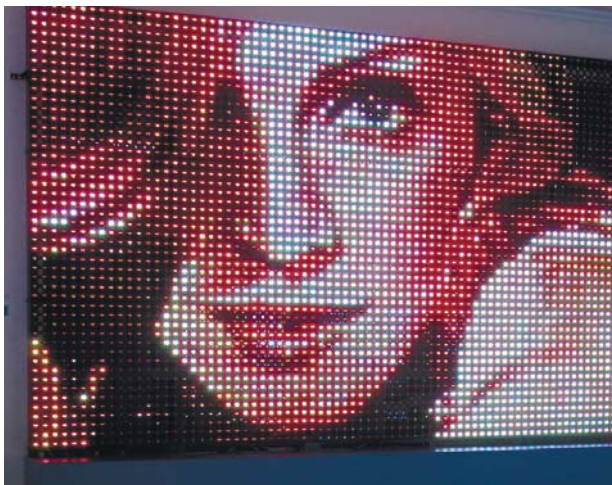
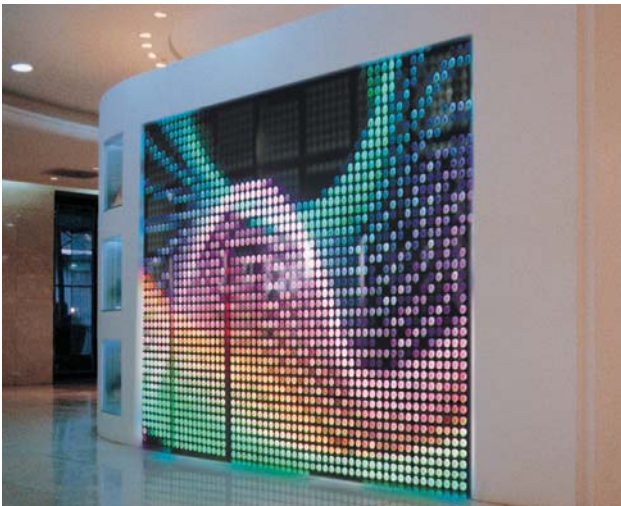


LED VIDEO MESH CONTROLLER



General Description:

The LED video color screen is suitable for stage scene setting. It is multimedia LED display system revealing virtual scenes and color effects. For its unique features of seeing through, lightweight and thinness, this system has shown its unparalleled artistic charm. It is easy and quick to install or dismantle, low cost, suitable to large-area scene making.

Specification:

No Mosaic Effect

Even and consistent distribution

Substantial (3 in 1) pixel technology

Large viewing angle, 120° either horizontally or vertically

Lightweight and easy to instal

Projects vivid and stunning visual imagery via PC control

DVI Signal Compatible

Utilizes Standard CAT5 LAN Cable Interconnection

Signal transmission of up to 130 meters additional hardware with no signal degradation

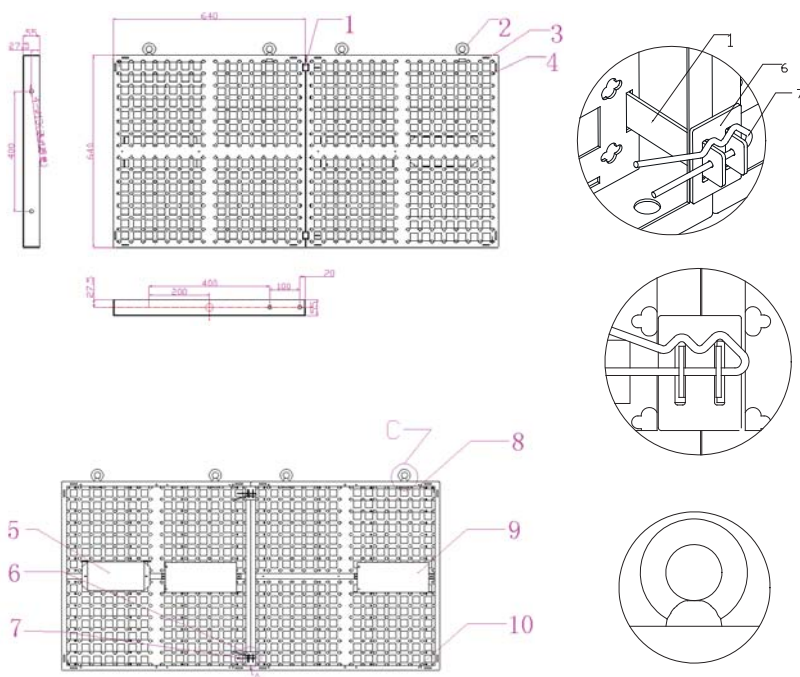
Controllable with the Vision Studio MX Control and software system

LED VIDEO MESH CONTROLLER

Specifications:

Module size	25.20" x 25.20" x 2.55"
Pitch	2"
Pixel Composition	2R1G1B 4pcs Ø5oval LED
Cell Resolution (LxW)	16X16
Dot intensity(dot/ m ²)	625
Luminance(cd/ m ²)	1300
Optimal Viewing Distance(m)	60
Module Peak Power Consumption	≤75W/m ²
Modules aver. Power Consumption	≤40W/m ²
Module Weight (kg)	22 pounds
Scanning Mode	static scan
Viewing Angle	Horizontally 120°, Vertically 120°
Drive Voltage (V)	4.5 ~ 5.5V
Fade Gradients	256 gradients for Red, Green, Blue respectively
Frame Change	≥60 (f/s)
Control Mode	Real Time PC Monitoring
Lifespan	≥100,000 hrs
Blind Pixel Rate	≤0.0002
Operating Voltage	AC100 ~ 240V 50 ~ 60Hz
Control Distance(m)	<130
Operating Temperature	-10°C ~ 50°C
Operating Humidity	10%~90%RH

Connection Instructions:



1. U connector for interconnecting modules
2. Rigging Points (eye bolts).
3. U connector insertion channel
4. MESH PCB
5. Scanning Vision Scan Controller (VSC)
6. Spacer for U connector
7. Key Pin for securing U Connector.
8. M6 female threaded hole for fixed frame installations
9. Power Supply
10. Vertical Mounting Hole for Vision Scan Controller

LED VIDEO MESH CONTROLLER

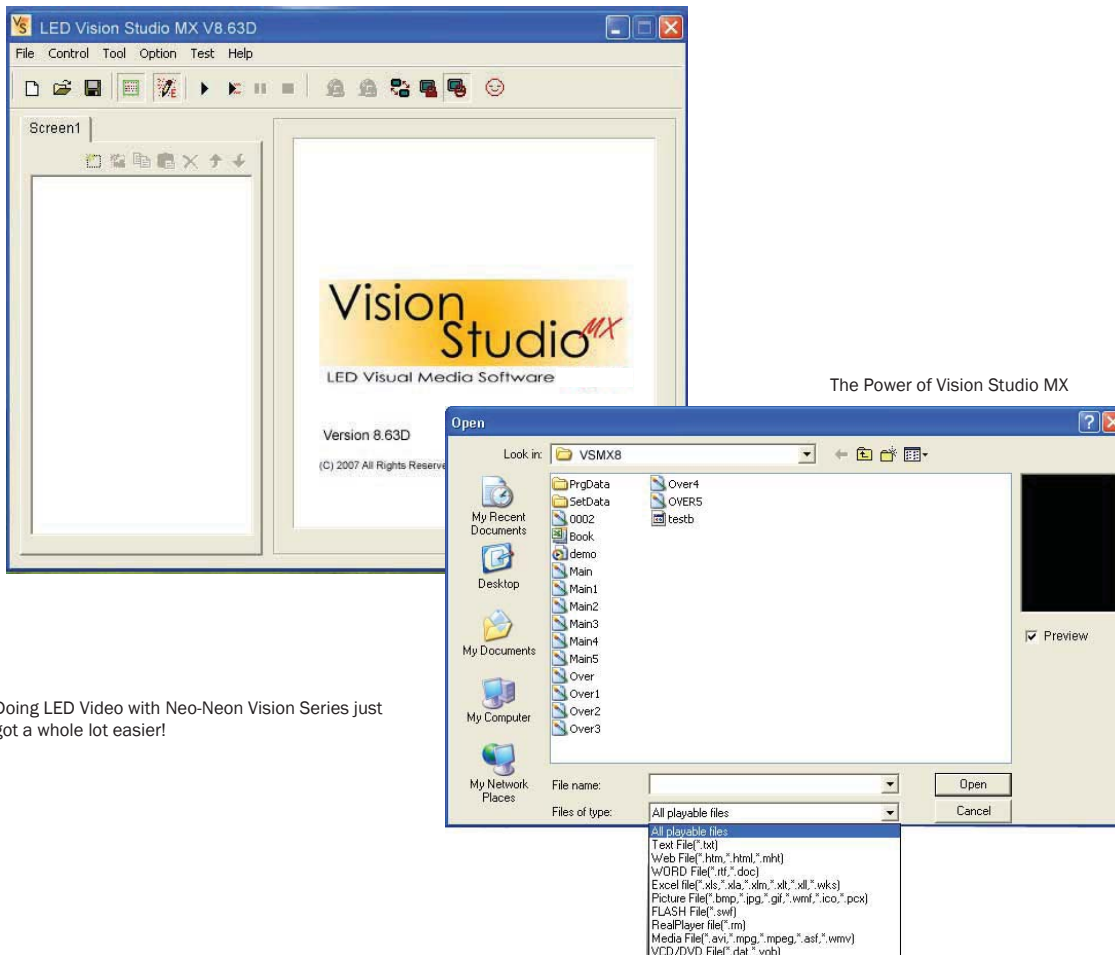
Software and Hardware Components:



LED Visual Media Software

Vision Studio MX (Multi-FiXture) is the latest and most advanced software solution for the control of the WDM Series Products. Compatible with Windows XP, Vision Studio MX adds the power of video capture and integrates the video signal across the entire range of the Vision Series products.

Vision Studio MX has a simple to use and navigate Graphical User Interface (GUI)



Doing LED Video with Neo-Neon Vision Series just got a whole lot easier!

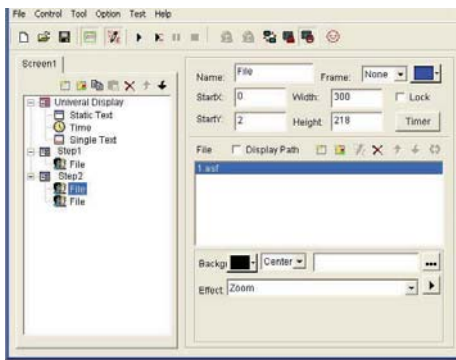
LED VIDEO MESH CONTROLLER

Software and Hardware Components:

1. Import and play the following file types

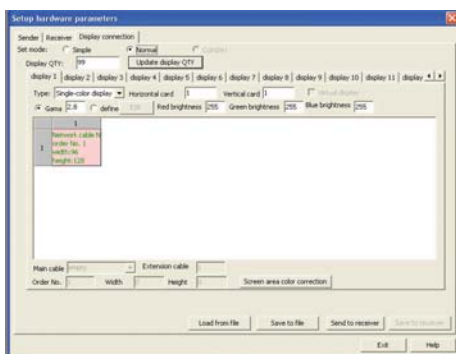
- a. .txt
- b. .htm, .html, .mht
- c. .rtf, .doc
- d. .xis, .xla, .xlm, .xlt, .xll, .wks
- e. .bmp, .jpg, .gif, .wmf, .ico, .pcx
- f. .swf
- g. .rm
- h. .avi, .mpg, .mpeg, .asf, .wmv (Video Formats)
- i. .dat, .vob (DVD and DVD formats)

2. Easy to use Show Editor



3. Multiple Fixture (Receiver Assignments)

Up to 99 Receiver units can be controlled from (1) Vision PCI/DVI Control Card



4. Vision Studio Hardware

Vision Studio MX PCI/DVI Card

The Vision Studio MX PCI/DVI card is designed to be installed into a PCI slot on the main board of your PC and can control up to 99 receiver cards or units.



Vision Studio MX Receiver (Scan) Card



The Vision Studio MX Receiver (Scan) Card is installed into the Scan Controller as a part of the Vision Studio control system offered with our Neo-Neon Vision Series Product

See specific Vision Series Product information for the quantity of Vision Series Scan Control Units required for the intended product and display matrix.

5. Vision Studio is designed to work with the following Neo-Neon Products

- a. LED Vision Screens (currently compatible)
 - b. LED Vision Flex (future compatibility)
 - c. LED Vision Belt (future compatibility)
 - d. LED Vision Panel (future compatibility)
 - e. LED Vision Panel Pro (future compatibility)
 - f. LED Vision Floor (future compatibility)
 - g. LED Vision Tube (future compatibility)
 - h. LED Vision Pixel Round (future compatibility)
 - i. LED Vision Pixel Square (future compatibility)
 - j. LED Vision Pixel O30 Round (future compatibility)
 - k. LED Vision Pixel Panels (future compatibility)
 - l. LED Vision Mesh (indoor) (currently compatible)
 - m. LED Vision Mesh (outdoor) (currently compatible)
- And all future LED Vision Products

6. Operating System Requirements

Chinese/English Windows98/me/2000/NT/XP

Hardware Configuration

Pentium 300MHz or above
ROM: 64M
Graphics Card: Standard VGA 256mode or above

Related Software

Microsoft Media player (compulsory)
Microsoft OFFICE2000
RealPlayer
Shockwave Flash Player